



Issue 92 | December | Hakihea 2025

WAIPUNA *Connections*

Bringing you closer to the lives you help change



Inside this issue: A year in review, 2025 Farmers Christmas Baubles are in stores, Sarah's rare journey and remarkable perspective, celebrating so much support from our community, and much more!!





Year in Review

A word from our CEO, David Bryant.



Above: David thanking our supporters at our recent Gratitude Event.

As the year draws to a close, I find myself reflecting on the incredible connections we've strengthened across our Waipuna Hospice community.

One of the true highlights for me this year was having the opportunity to meet so many of you - our supporters. Hearing your stories, understanding what motivates your commitment, and simply sharing a moment of gratitude has been deeply inspiring.

Our recent Gratitude Event was a perfect example of this. Over 80 people came together into a room filled with love, friendship, and harmony. Donors had the chance to hear from past and current patients, experience a day in the life of a hospice nurse, and see firsthand the remarkable impact of their generosity. **It's moments like these that remind us that every dollar gifted, every act of support, truly makes a difference.**

While discussions with Te Whatu Ora - Health NZ continue, it's clear that increased government funding is not on the horizon. This reality makes the support of our community even more vital.

Some people think working for hospice must be heavy, that it's hard to be around death, but I have found that there's nothing negative about it; it's a place of inspiration that enables you to see the good in the world and what truly matters in life.

Every day, I am blown away by the generosity, compassion, and commitment that surround Waipuna. I see it in our volunteers, our staff, and every person who champions the work we do. Our team's ability to turn challenges into opportunities - to spin straw into gold - is nothing short of extraordinary.

As I look to the New Year, one key focus will be finding new ways to support our incredible clinical frontline staff, ensuring they have the resources, care, and encouragement they need to continue the exceptional work they do each day.

Another key focus ahead is helping our entire community truly understand the depth of what we do and the difference it makes. Our market research reminded us that while families we support know our work well, many others don't, and it's time to broaden that understanding across our whole community.

I would like to take the opportunity to personally thank everyone who has supported Waipuna this year - staff, volunteers, donors, families, and everyone in every corner of our community. Your generosity, care, and commitment are what make all of this possible. **Thank you for being part of this journey with us.**

Ngā mihi nui,

David Bryant
CEO, Waipuna Hospice



Thank you to  **CRAIGS** INVESTMENT PARTNERS for sponsoring this newsletter.

Farmer's Baubles are back!!

Last year, Farmers stores across Aotearoa raised an incredible \$1 million for hospices nationwide. An achievement made possible thanks to the generosity of customers and the continued commitment of the Farmers team. This year, they're hoping to do it all again, and we're excited to be part of this much-loved Christmas tradition.

One of the key highlights of the annual campaign is the release of the 2025 limited-edition Hospice Christmas Bauble, now available at Farmers stores nationwide for \$15.99. Each year's bauble carries a unique design inspired by the heart of hospice care, and this year's design features Holly, a cherished Christmas symbol representing protection, good fortune, eternal life and resilience. These qualities beautifully reflect the compassion and strength that live within hospice communities throughout Aotearoa.

Thanks to the incredible support of Farmers, 100% of the purchase price from every bauble sold in-store or online is donated directly to your local hospice. For our community, this means that every bauble purchased at Bayfair, The Crossing, and the Tauranga CBD Farmers stores comes straight back to Waipuna Hospice.



These baubles sell out every year, so be sure to get in quick to secure yours.

While visiting Farmers, you can also take part in the deeply meaningful Tree of Remembrance. By making a donation at the counter, you'll receive a remembrance tag to write a message to a loved one. These heartfelt tags are then placed on the store's Christmas tree, becoming part of a beautiful display of love, memory and connection.

At the end of the campaign, all the tags from our local stores are collected and brought back to our Te Puna grounds, where they are blessed in the New Year as part of a special remembrance tradition at Waipuna Hospice.

Your support, whether through purchasing a bauble or taking part in the Tree of Remembrance, makes a genuine difference to patients and families in our community facing life-limiting illness. **Thank you for helping keep hospice care close to home this Christmas.**



Thank You to our Supporters

We could not continue providing the level of care that we do without funding from our local community and we want to thank those below for their support.

Matrix
Christian
Charitable
Trust

 **perpetual
guardian**
John & Mary Wilson Foundation
St. Joan's Trust.

 **Bupa
Foundation**

 **WE CARE**
COMMUNITY TRUST LIMITED

 **THE LION
FOUNDATION**

 **Steadfast
FOUNDATION**

 **nzct**
COMMUNITY TRUST



A rare journey. A remarkable perspective. This is Sarah's story.

When Sarah describes living with Mucopolysaccharidosis Type III - an ultra-rare genetic condition that only four people in New Zealand share - she paints a picture you can instantly see:

"If you think of a nice clean kitchen, and then the next day there's a rubbish bag, and then the next day there's another, and another, and another - until you can't move in the kitchen. That's what my disability is," she says. "I can't break down all the garbage that builds up in my body, so it just stores in my organs and bones, and basically destroys my body."

She says it without self-pity. Just honesty. And incredible strength.

Because despite the pain, despite the fragility, despite the barriers most people never see, Sarah has always chosen to live boldly. To live fully. To live with purpose.

ML3 is a lysosomal storage disorder that affects the skeletal and connective tissues, filling the body with toxins it can't remove.

For Sarah, it has meant a lifetime of pain, fragility, and constant challenges - but also a lifetime of choosing joy, courage, and determination.

Sarah has never allowed her disability to define her. She has never let it hold her back.



Sarah and her family on a trip to Australia, proving that her condition will not stop her from living life.

She's raced hot laps in a Ferrari, soared above Aotearoa in a helicopter, braved the Queenstown gondola and the jet boat in Wanaka, and even climbed the Mount. And this January, she'll celebrate her 40th birthday – a milestone proudly written on her bucket list.

It is obvious speaking to her, that Sarah's parents raised her with one powerful message:

To accomplish anything in life, you've got to go and do it. Try your best. And if you fail, that's all right - at least you tried.

Sarah lives by this and two other guiding values:

1. Be kind to each other.
2. Live your life to the fullest.

They sound like small things - but to Sarah, they're everything.

"My purpose in life has been to inspire people," she says. "No matter what's in the way. I'm so happy that I can inspire people and I know that when I leave this life, I'll be a happy woman because I achieved what I wanted to achieve and leave everlasting memories for people."

That purpose didn't appear on its own. It's something her mum, Jenny, has fought for tirelessly.



Sarah with her mum, dad, and brother Hayden who had the same rare condition.



Sarah hasn't let her condition stop her from living her dreams and inspiring others.

Jenny has spent her life refusing to accept “no” as an answer. When experts were uncertain, she researched.

Long before email existed, she was writing letters around the world, seeking specialists willing to help. She founded Cure Mucopolysaccharidosis (Cure ML) in 2001 and now works with researchers at the University of Massachusetts, who have just begun developing and testing a brand new gene therapy.

But above all, Jenny fought for her children to have a childhood, not a diagnosis.

In 1990, a Belgian specialist told her something that shaped their entire family’s approach: **“Do not wrap your children in cotton wool. Let them enjoy life for as long as they can, because pain and mobility will take that from them soon enough.”**

So they did.

They told their children the truth as soon as they started asking questions about ML. They created memories, embraced adventure, and they lived.

When pain eventually forced Sarah to seek support, she turned to Waipuna Hospice - a place she already knew through her brother Hayden’s journey with the same illness.

For Sarah, hospice has been a lifeline - not just at the end of life, but through life. A place that sees her not as a diagnosis, but as a woman full of fire, creativity, and purpose.

Sarah’s older brother, Hayden, lived with the same condition. When the pain became overwhelming, he made the courageous choice to go into palliative sedation. When the medication wasn’t working as it should, it was Jenny who figured out why. A research paper was written, allowing Sarah’s journey to be better than her brothers was.

Through that experience, through the heartbreak and the courage, one thing became clear: **compassionate, expert pain management changes everything.**

This is why hospice has become such an important part of Sarah’s life too. For their whole family, hospice has brought relief.

“I don’t know what I would have done without hospice, to be honest,” Jenny says.

“Your team go over and above. And it’s amazing. People think hospice is only for cancer, but in actual fact hospice is there for pain management, symptom management, and end-of-life care. For families like ours. And it really upsets me that hospice is not fully funded, because it should be.”

Sarah’s story reminds us that while we cannot choose the challenges life gives us, we can choose how we show up for ourselves and for one another.

With your support, hospice can continue to show up for families like hers - with compassion, dignity, and care that truly changes lives.



The Heart of our Community

This year, we've been incredibly grateful for the many community groups, families, friends, and individuals who have stepped forward to host their own fundraising events in support of Waipuna Hospice. These third-party events, organised independently by generous people across our region, have made a remarkable impact. Since 1 July alone, these amazing efforts have collectively raised **\$55,000 for Waipuna Hospice**.

From concerts and theatre productions like the uplifting **Third Space Concert** and the **Lions' Accomplice Theatre performance**, to the joyful **Senior Music Festival**, the arts have once again brought people together in the name of compassion and care.

Our community's love of sport and friendly competition was also on full display, with fundraising tournaments held across golf courses and bowling greens - from the **Ocean Shores Bowling Tournament** and **Builders Association Golf Day** to the **Forsyth Barr** fundraiser. Each one brought people together for a great day out while raising vital funds for hospice care.

We also saw wonderful gatherings and local initiatives, such as the **Catley Annual Brunch**, the warm and welcoming **Ōmokoroa Morning Tea**, and the creative **Guthrie Bowron upcycled furniture event**. The **Rotary Sunrise charity breakfast** with Te Radar was another standout moment of generosity and community spirit.

And in one of the year's most heartfelt acts of giving, **Phillipa's 'Locks of Love'** will see her bravely cut off her dreadlocks to raise awareness and vital funds for Waipuna Hospice.

Every event, whether large, small, sporty, artistic or deeply personal, has helped strengthen the care we provide. We are immensely grateful to every person and group who chose to support us this year.

If you've been thinking about hosting your own event or would like to explore a fundraising idea, we'd love to hear from you. Get in touch with our team at fundraising@waipunahospice.org.nz, and let's continue making a difference together.





Thank you to  **CRAIGS** for sponsoring this newsletter.

On Par for a great cause

Earlier this month, we were thrilled to host our annual Waipuna Hospice Golf Tournament at the beautiful Ōmanu Golf Course, and what a day it was! We couldn't have asked for better weather or a better group of golfers to come together in support of hospice care.

Thanks to the incredible generosity of our players, sponsors, and supporters, **the tournament raised an amazing \$31,000.** These funds will directly help Waipuna Hospice continue providing free palliative care and bereavement support to patients and families across our community.

A huge thank you to our major sponsors, **Marshalls Innovation and Barfoot & Thompson**, for their outstanding support, and to our fantastic hole sponsors who made the day possible:

- **Craigs Investment Partners**
- **EIS**
- **Abron Group**
- **See It Limited**
- **Sybrand van Schalkwyk**
- **KPMG**
- **BDO Tauranga**
- **Energised Electrical**



The course was full of fun and friendly rivalry, with competitions including Longest Drive, Closest to the Pin, and a range of on-course activities to keep the energy high. We also held an exciting in-person auction, which contributed significantly to the successful fundraising total.

A massive congratulations to **Energised Electrical**, who took out the overall win for the tournament!

To everyone who played, sponsored, donated or supported the day in any way, thank you. Your involvement helps ensure Waipuna Hospice can remain by the side of those who need us most.

This event will absolutely remain a highlight on our annual calendar, so if you'd like to get involved in next year's spectacular day, please get in touch with us at events@waipunahospice.org.nz. We'd love to have you join us!





First-Class generosity

We are over the moon to thank **House of Travel Mount Maunganui, Papamoa, The Lakes, and Rotorua** for generously donating their staff Christmas party to Waipuna Hospice this year. Due to ongoing financial challenges - being only 43% government-funded - we weren't going to have the resources to host a staff celebration this year. When House of Travel heard this, they immediately wanted to help us take off and gave us the gift of a wonderful evening as a thank you for the work we do in our community.

Thanks to their generosity, our staff enjoyed an Around the World-themed evening at the Historic Village, taking time to reflect on a year of hard work and dedication. Some of the House of Travel team even joined the celebration in stunning air hostess outfits, running fun activities while we sipped drinks and nibbled on treats, a truly first-class experience for all involved.

As if that wasn't enough, House of Travel called in their passengers (clients) to help support our cause this Christmas. With their encouragement, many clients generously donated, helping **raise an incredible \$22,000** for Waipuna Hospice, which will go straight into patient care.

We are so grateful to House of Travel for helping us jet-set into the festive season with joy, celebration, and a little extra magic. Their support reminds us that sometimes the best journeys are those we take together and that even a small lift can help us soar.



Selling a home for Hospice



If you haven't heard about Homes for Hospice, it's a new fundraising campaign we recently launched in conjunction with The Northern Group. The wonderful team at The Northern Group are selling a house and will donate 100% of the commission to Waipuna Hospice.

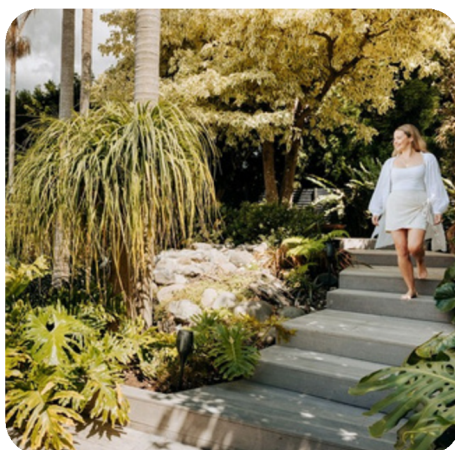
This campaign's generosity helps ensure no one has to face life's final journey alone.

The home that has been chosen is located in the Bayfair area and is a stunning property with an outdoor sanctuary that makes you feel like you're at a resort on a tropical island!

100 Russley Drive, Mount Maunganui
3 Bedrooms | 2 Living Areas
2 Bathrooms | Double Garage
TO BE AUCTIONED: 11TH DECEMBER AT 2PM



CHECK OUT THE LISTING



Christmas Hours



Waipuna Hospice patient services will remain open and running, with no disturbance to our standard operating hours during the Christmas and New Year period.

Waipuna Hospice Finance, Human Resources, Operations, Marketing & Fundraising and Volunteer Department will be closed from the 24th of December to the 4th of January.

All of our Charity Shops and Depots will be closed from the 24th of December to 26th of December, and again from the 31st of December to 2nd of January.

There are additional closures at some sites over the Christmas and New Year period, so please check our social media, website and Google for the exact hours of each location.



Pay for Christmas Day Hospice Care

Christmas Day is meant to be filled with togetherness, comfort, and love. But for many of our patients and their families, it can also be one of the hardest days of the year. While the community gathers to celebrate, some will spend December 25th in our Inpatient Unit, facing the challenges of terminal illness and the weight of saying goodbye.

At Waipuna Hospice, we are committed to ensuring that Christmas remains a day of compassion, dignity, and care, no matter the circumstances. This year, it will cost \$10,000 to provide the specialised nursing support, warm meals, clinical care, and peaceful environment needed to make Christmas Day as gentle as possible for those in our Inpatient Unit.

Your gift, no matter the size, can truly change someone's Christmas. It might help fund a comforting meal, support essential clinical care, or create a quiet moment of peace for a family sharing their final Christmas together.

Scan me to donate
this Christmas!
Every bit counts.



Waipuna Wish List

As we continue to care for our community with compassion and dignity, there are always practical items that help keep our hospice running smoothly.

The Waipuna Wishlist highlights a handful of essential needs - equipment, supplies, and resources that directly support our patients, families, and clinical teams. By helping us fulfil these small but meaningful wishes, you're ensuring we can continue providing the high level of care our community relies on every day.



Heat packs – \$15 each.

To provide gentle pain relief and warmth to patients in need.

Board games & puzzles – \$25 – \$35

To offer comfort, distraction, and togetherness for families spending long days at the hospice.

Portable fans – \$30 each.

To help keep patients cool and comfortable during warmer days.

Essential toiletry packs – \$45 per pack.

To provide dignity and comfort for patients who arrive with very little.

Mobility aids (walkers/frames) – \$120

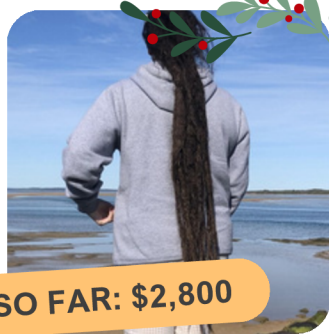
each. To help patients safely move around with confidence and support.

Stethoscopes for community nurses -

\$170. To ensure nurses have the proper equipment to assess the patient.

Outdoor furniture for patient gardens –

\$800 – \$1,200. Creates peaceful spaces for families to spend precious moments together.



TOTAL RAISED SO FAR: \$2,800

Phillipa's losing her locks for Waipuna

Phillipa has nurtured her dreadlocks for over 20 years. It's safe to say her dreads have been a big part of her identity and a constant in her life. Much like her Dad was.

"They've been with me through life's ups and downs, and now they're coming off – for love, for gratitude, for a cause that's etched on my heart."

Phillipa's Dad, Phillip, was diagnosed with prostate cancer in 2007. It eventually spread throughout his body, and in August 2018, Waipuna Hospice supported Phillip in his final battle with cancer.

"With their support, we were able to keep Dad at home until his final days. This included delivering a hospital bed and aids, home visits and a nurse making a 1.5 hour round trip to administer much needed pain relief - TWICE in one night! When we couldn't provide Dad with the level of care he needed, he moved into the hospice IPU and the beautiful Waipuna team gently took over from us. They were able to make him comfortable for his last few hours with us. We were and are so grateful to them for everything they did for us."

This year, the Hamilton family will be together for the first time since Phillip passed. Phillipa is going to let her Mum cut her dreads off – a Christmas present of sorts! Her Mum has never been a big fan of them. Phillipa loves her dreads, but felt this was something significant she could do to raise money for hospice, so we can continue to care for other families in need.

givealittle.co.nz/fundraiser/locks-of-love-for-waipuna-hospice

Planning to sort your Will over the summer?

Do it online for free!

We've partnered with Gathered Here to help you write your will online. It's quick, easy and free!



"I recently used Gathered Here to create my online will, and I couldn't be happier! The process was incredibly straightforward and took less than 10 minutes from start to finish."

Many supporters use this opportunity to leave us a gift in their will, but there is no obligation.

Scan here to create your free Will online



If you're having a holiday clear-out this season, please consider donating your quality preloved goods to our charity stores.

This is a great way you can support Waipuna Hospice. Our Papamoa and Brook Street depots will be open with the exception of the public holidays.



Get organised for the New Year!!

Get organised for the New Year with our 2026 diaries and calendars. Our calendars are full of beautiful artwork donated by local artists, and our diary is sprinkled with recipes and gardening tips you'll love!

Calendars and Diaries - \$20 each

A delicious year lies ahead

Need meal inspiration? Look no further than this beautiful cookbook from the team at Eves! It's packed with tasty recipes that will leave everyone wanting more!

Cookbooks - \$20 each

Order yours today:

Give us a call on 07 552 4380 ext. 211 or scan the QR code to order online.



Keep these easy to donate details handy!

4 EASY WAYS TO DONATE



Mail the blue coupon to:
Waipuna Hospice
PO Box 16299
Bethlehem
Tauranga 3147



Internet Banking:
Please confirm your donation by emailing:
supporter@waipunahospice.org.nz

Waipuna Hospice bank account details:

Waipuna Hospice
03 0435 0469107 02
Ref: WCDEC25

Please include your phone number.



Phone 07 552 4380
Ext. 211



Donate or shop online at:
waipunahospice.org.nz



I would like to make a donation so people in our community facing a terminal illness can receive the care they need.

Step 1 - My Gift ☐ \$30 ☐ \$50 ☐ \$75 ☐ \$100 \$ (other)

Step 2 - Donation Frequency ☐ One-off ☐ **Set-up a regular donation for more impact**

☐ Please send me a direct debit form
☐ Debit my credit card (see step 3)

Step 3 - My Payment
(if paying via credit card)

Card Number

Expiry Date

Name on Card

Signature

I would like to purchase the following Waipuna Hospice merchandise (GST included)

☐ 2026 Diary \$20 ☐ Eves Cookbook \$20
☐ 2026 Calendar \$20

TOTAL \$ + \$5 shipping on all merchandise orders

☐ I would like to cover the 2.5% card transaction fee for Waipuna Hospice.

My Details

Title First Name Last Name Date of Birth

Address

Phone

Email

- ☐ I would like to receive future communications via email.
☐ I would like to know more about becoming a regular giver to maximise my impact.
☐ I would like to know more about leaving a gift in my Will for Waipuna Hospice.

Donations of \$5 or more may qualify for a tax rebate. Charity # CC63387
If you wish to unsubscribe, please notify us at communications@waipunahospice.org.nz